

SERVICE GUIDE

KYE SYSTEMS CORP



SW-V2.1 1250

Version:1.0

Revision History

Version	Date	Change
1.0	25/07/2007	

Table of Contents

Revision History	2
Table of Contents	3
Getting Started	4
Conventions Used in this Guide	4
Safety Precautions	4
 Chapter 1. How to Handle Defective Returns	 5
1.1 Overview	5
1.2 Problems	6
1.2.1 L/R channels no sound	7
1.2.2 Woofer channel no sound	8
1.2.3 No power	8
Chapter 2. Specifications	9
Satellite	9
Host(Woofer)	9
Chapter 3. Block Diagram	10
Chapter 4. Exploded View	11
Host(Woofer)/Satellite	11
Controller	12
Chapter 5. Part List	13
Chapter 6. Schematic Diagram	14
Chapter 7. Important Notes	15
7.1 Packing Requirement for Sending the PCB Assembly by post	15
7.2 Short of Spare Parts while Repairing a Speaker system	15

Getting Started

Conventions Used in this Guide

Pay Special Attention: Instructions that are important to remember and may prevent mistakes.

Caution: Information that, if not followed, may result in damage to the product.

Safety Precautions

The following precautions should be observed in handling the speaker described in this guide:

Place the speakers on a flat, level and stable surface.

Do not place the speakers in environments subject to mist, smoke, vibration, excessive dust, salty or greasy air, or other corrosive gases and fumes.

Do not drop or jolt the speakers.

Do not allow anything to drop into the subwoofer case through its ventilator, as it could result in fatal electric shock or fire.

Place the unit far enough from other equipments for good heat dissipation.

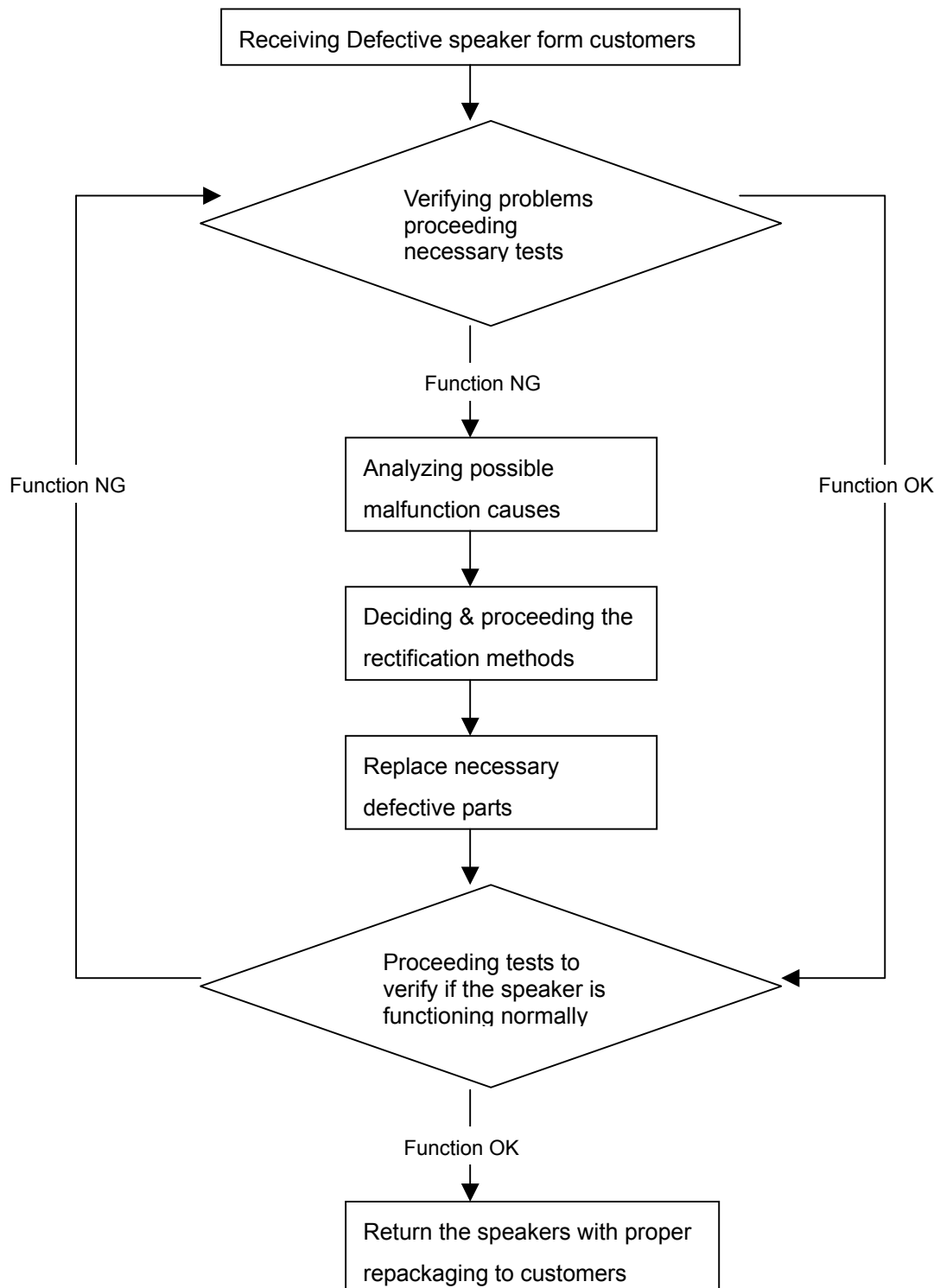
Disconnect the AC power cord from the AC outlet before performing any maintenance on the speakers.

Do not perform any maintenance with wet hand.

Prevent foreign substances, such as water, other liquids or chemical, from entering the speakers while performing maintenance procedures on the speakers.

Chapter 1. How to Handle Defective Returns

1.1 Overview



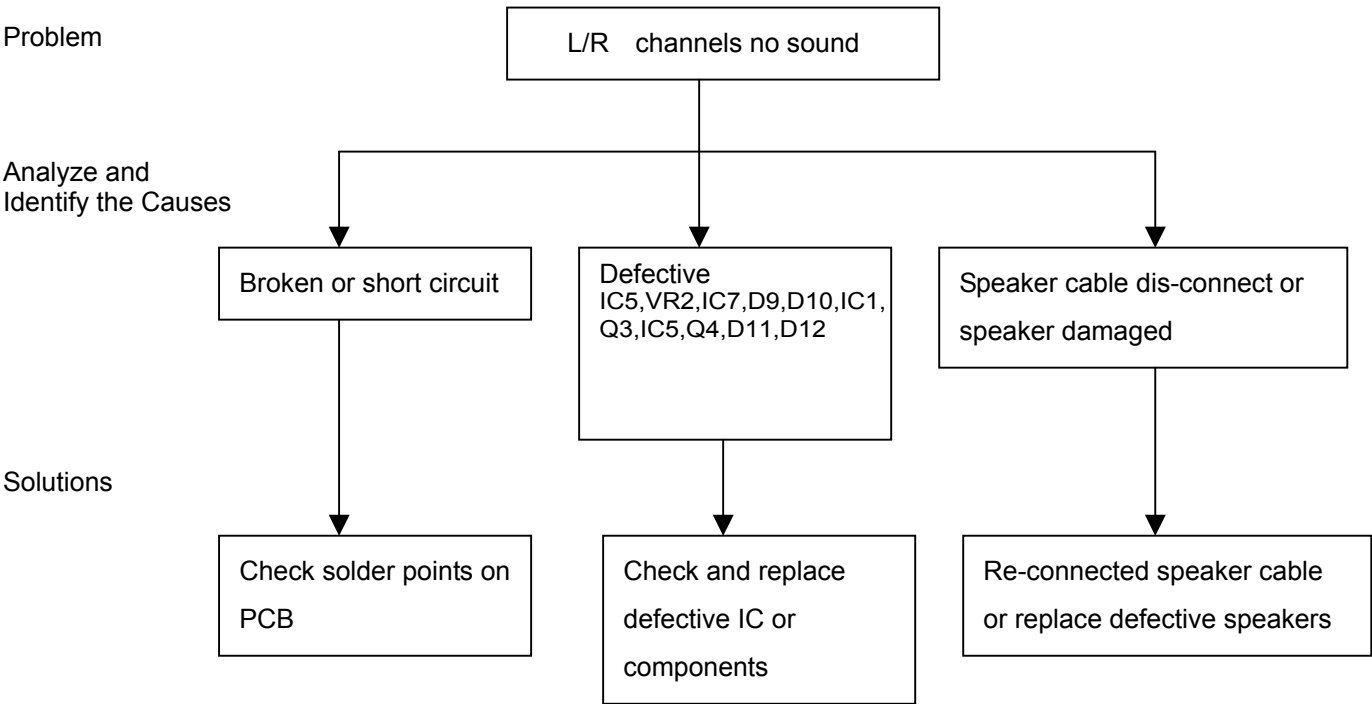
1.2 Problems

<u>Item</u>	<u>Problem Description</u>
1.2.1	L/R channels no sound
1.2.2	Woofer channel no sound
1.2.3	NO power

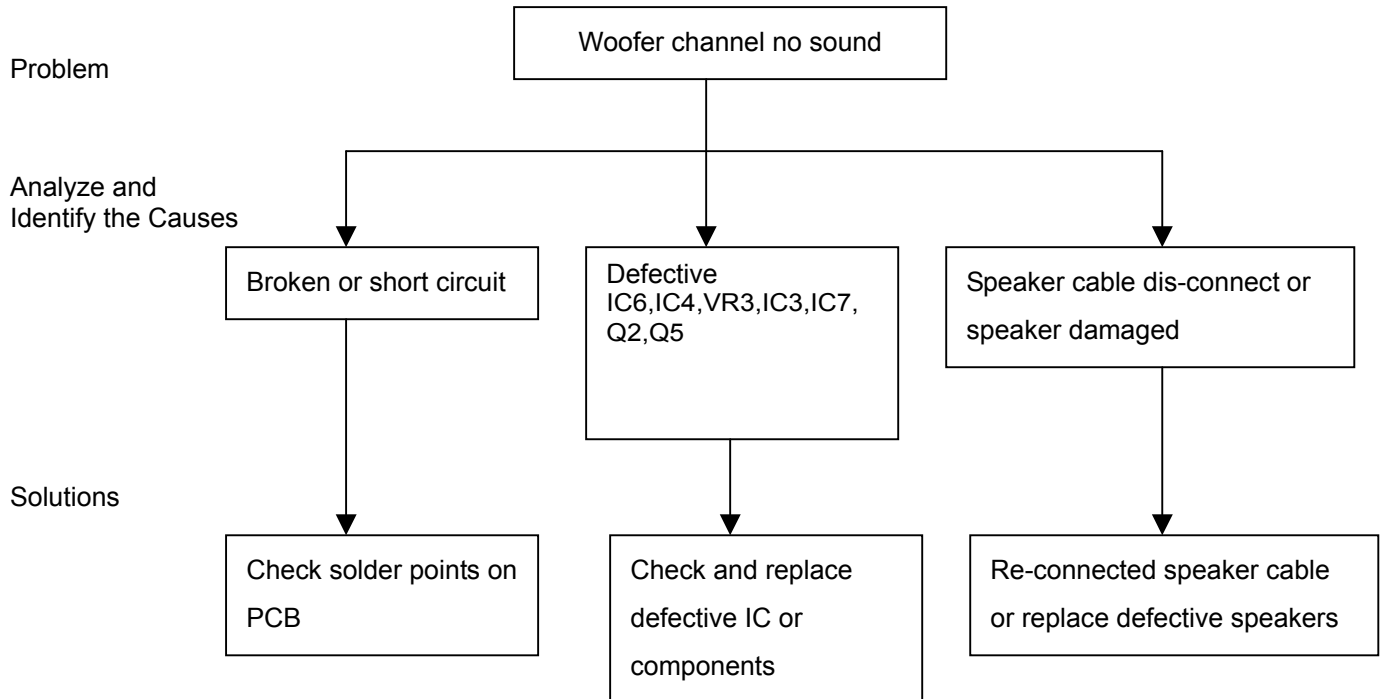
* Attention

Please follow the numbered sequence marked within parenthesis given in individual Flow chat, in that this is the best-recommended sequence to rectify the problems.

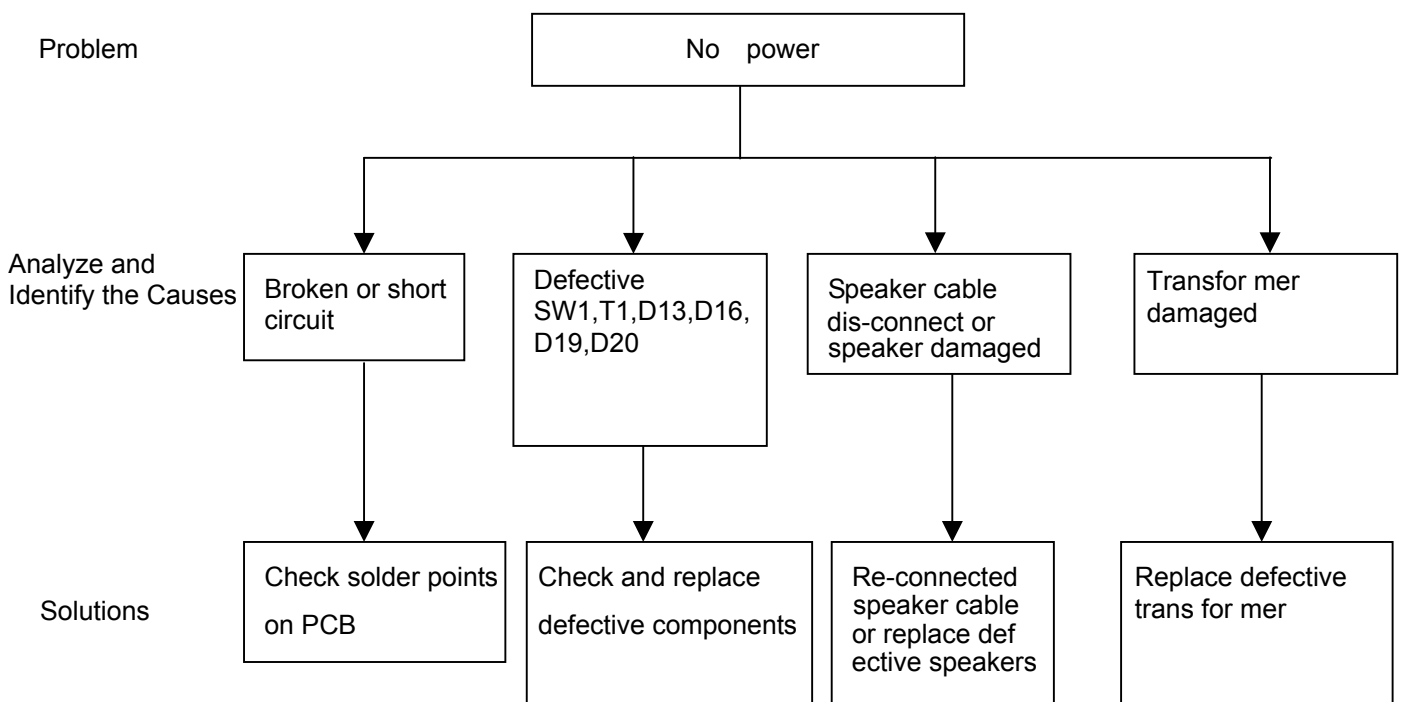
1.2.1 L/R channels no sound



1.2.2 Woofer channel no sound



1.2.3 No power



Chapter 2. Specifications

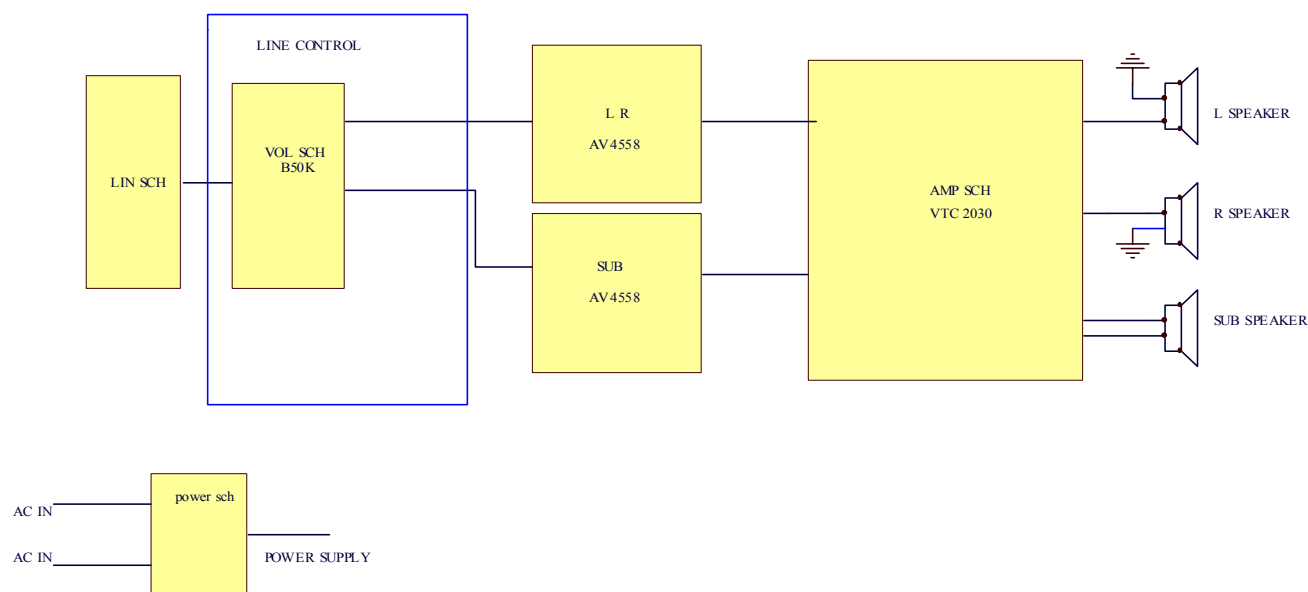
Satellite – Front (AT 1KHZ):

NO	Description	Unit	Specifications
1	Out Power at THD 10%	W	12± 2
2	Sensitivity	mV	510 ± 60
3	Freq Response (Ref:-3dB)	Hz	120~20K
4	Separation	dB	> 30
5	S/N ratio	dB	> 60
6	Hum & Noise Vol:max	mV	<3

Host (Woofer) (AT 100Hz):

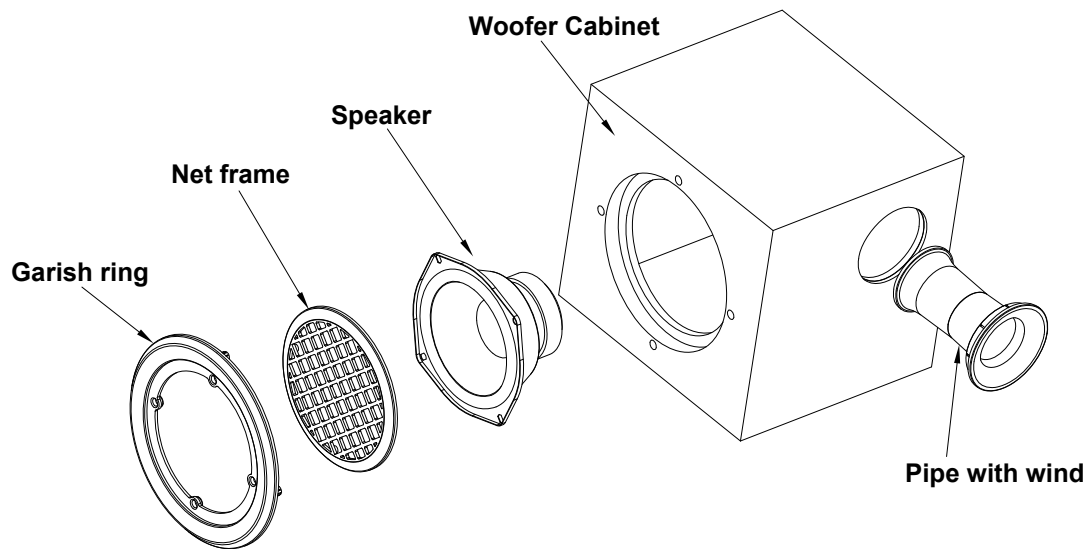
NO	Description	Unit	Specifications
1	Out Power at THD 10%	W	20 ± 2
2	Sensitivity	mV	210 ± 50
3	Freq Response (Ref:-3dB)	Hz	40~180
4	S/N ration	dB	>55
5	Hum & Noise Vol: max	mV	<5

Chapter 3. Block Diagram

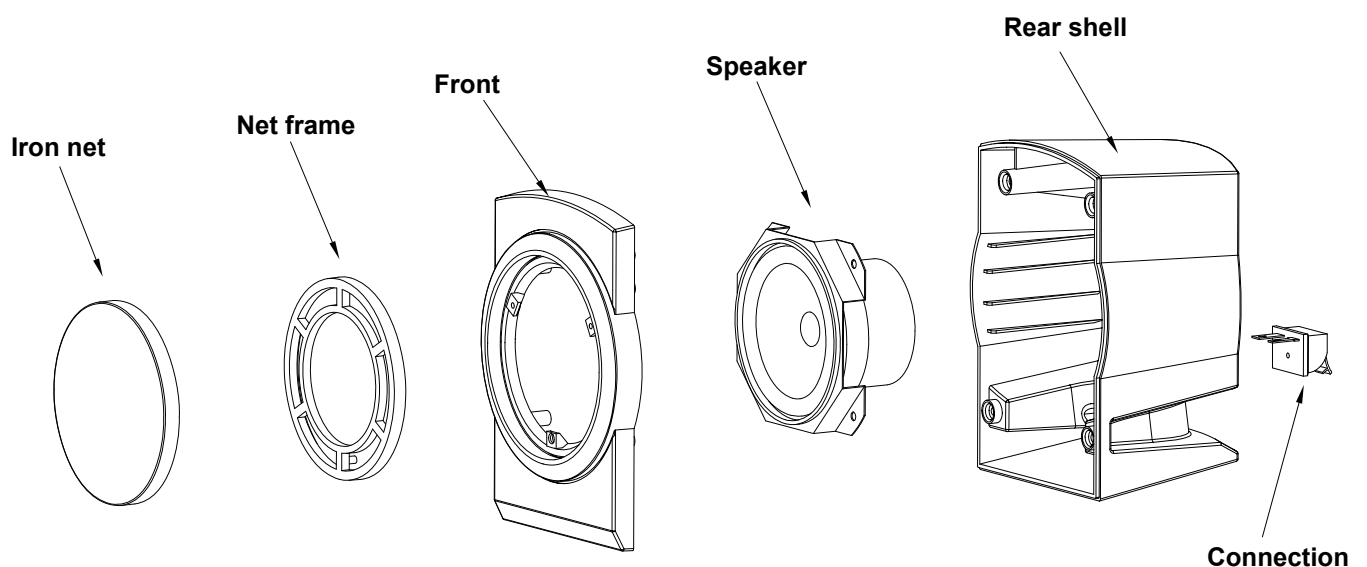


Chapter 4. Exploded View

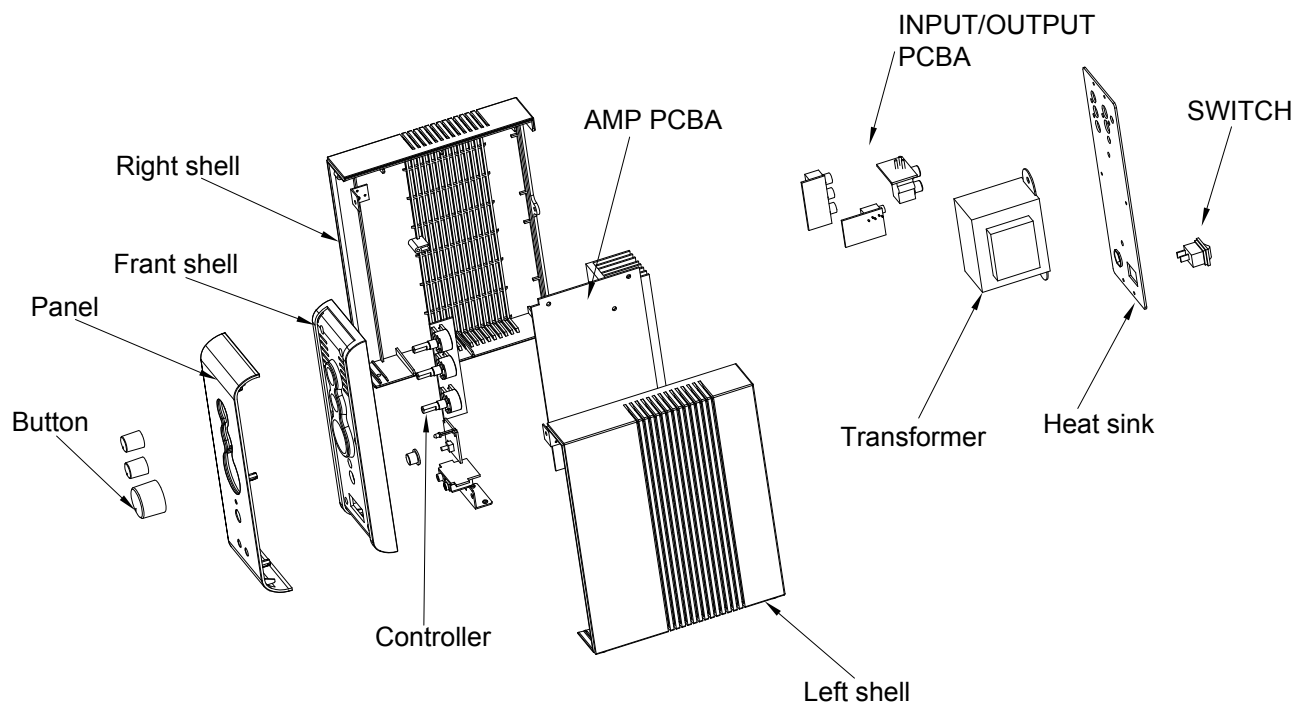
Host (Woofer)



Satellite



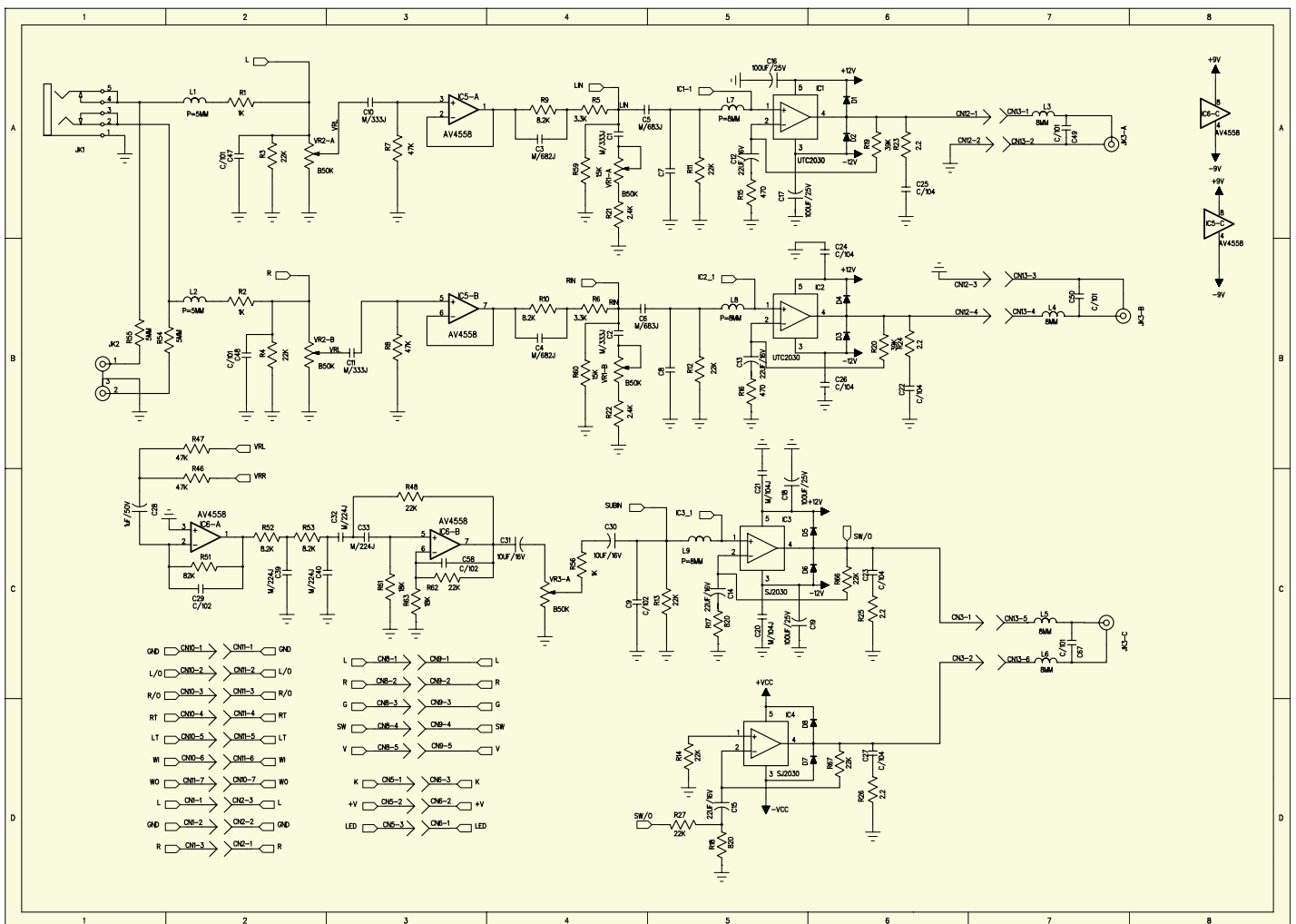
Amplifier



Chapter 5. Part List

NO	DESCRIPTION	Qty	UNIT	Part No
1	SW-V2.1 1250/BODY/SATELLITE-FL	1	PC	220133220119
2	SW-V2.1 1250/BODY/SATELLITE-FR	1	PC	220133220119
3	SW-V2.1 1250/BODY/WOOFER/230V-EU	1	PC	220133220109
4	SPEAKER UNIT 5.25" 8 OHM 30WT	1	PC	20280525300404
5	SPEAKER UNIT 3.0" 4 OHM 10W	1	PC	20140300100107
6	RUBBER, WOOFER	1	PC	24104240302079
7	RUBBER, D8*1.5mm SATELLITE	1	PC	420000210109
8	MANUAL,SW-V2.1 1250	1	PC	462513322039
9	PCBA SW-V2.1 1250	1	PC	301133220019
10	IC 4558 ST	2	SET	403100020149
11	IC AZ 4558D	1	PC	403100080109
12	IC TDA2030A	4	PC	403000170109
13	ROTARY SWITCH, 50k	2	PC	401450025309
14	ROTARY SWITCH, 25k	1	PC	401450200709
15	CARTON,SW-V2.1 1250	1	PC	462113322029
16	TRANSFORMER,230V ~11Vx2/2A	1	PC	401450025309
17	AUDIO CABLE D3.5 L1.5M	2	PC	461461520089
18	AUDIO CABLE 2RCA to 2RCA L1.5M	1	PC	461471520279
19	CARTON LABEL	1	PC	462705090059
20	S/N LABEL	1	PC	462700370039
21	Round Red type Label, D18MM	1	PC	462700300079
22	PO BAG,SW-V2.1 1250(Satellite)	2	PC	462610252539
23	PO BAG,SW-V2.1 1250(Woofer)	1	PC	462610504819
24	PO BAG,SW-V2.1 1250(Amplifier)	1	PC	462610353029
25	PE BAG,SW-V2.1 1250(Audio cable)	2	PC	462620201039

Chapter 6. Schematic Diagram



Chapter 7. Important Notes

7.1 Packing Requirement for Sending the PCB Assembly by Post

PCB assembly is a kind of sophisticated electronic circuit board. Well packing will be required when sending them by post.

* Some sophisticated IC components are mounted on the PCB assembly, hence it is necessary to pack each PCB assembly with a separate static protecting bag, in order to avoid static electricity.

* Reliable external packing is also very important when sending PCB assembly by post, in that it would avoid unnecessarily lost or damage.

7.2 Short of Spare Parts while Repairing a Speaker System

If you are short of spare parts when you have some speaker systems waiting to be repaired, it would be recommended to take the necessary parts from one speaker system, so that you may have the as many speaker systems.